

Technical Bulletin

Model

All

Group

9

Subject: Radio and CD-2
Security Codes

Part Identifier
9120/24

Number
9104

ATTENTION: Service Manager/Service Technician

This bulletin supersedes Technical Bulletin Group 9, Book E, Number 8809, pages 273 and 274.

Models Affected:

Vehicles with Reno II radios, Stuttgart radios and Alpine CD-2 compact disc players

Concern:

Obtaining and entering security codes.

The purpose of this bulletin is to provide general information on Porsche radios and CD players requiring the use of security codes.

General Information:

Built-in anti theft circuitry will render the audio system of the radio / CD-2 unusable if the power supply is disconnected or voltage drops below 5 volts. When the radio /CD-2 is electrically reconnected, it will not operate until a security code assigned to the specific radio /CD-2 is correctly entered.

The security code is shown on the car radio identification card that is supplied to the customer with the radio /CD-2 owners' manual. This code must be obtained before the power supply is disconnected. If a security code cannot be obtained from a customer, contact the Porsche Cars N.A. Warranty or Service Technical Support Department by phone to obtain the security code. The following information is required:

- Dealer number and dealer contact name
- Customer name
- Vehicle identification number
- Radio /CD-2 serial number from radio /CD-2 cover plate (Figures 1-3)

PORSCHE CARS NORTH AMERICA INC.



Technical Bulletin

Model
All

Group
9

Subject: Radio and CD-2
Security Codes

Part Identifier
9120/24

Number
9104

Entering Security Codes:

Alpine CD-2

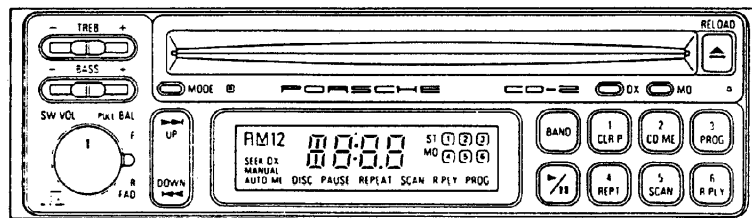
When the CD player is switched on after the power supply was disconnected, the word "code" appears in the display. The 5-digit security code must be entered by using the preset switches 1 through 6. If the code is entered correctly the CD player is ready to function again. If the code is entered incorrectly in three consecutive tries, the display will show "off". A waiting period of 24 hours is required before the CD player will accept another code entry. (Radio must be switched on with ignition key in radio position).

Important

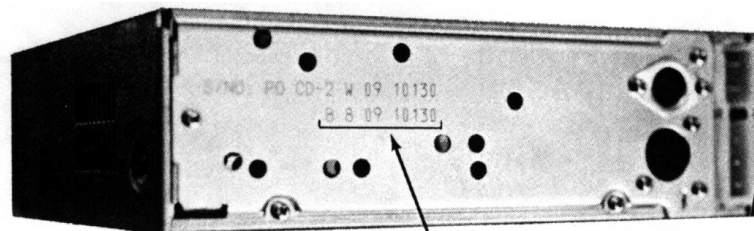
When entering the security code, the display changes to "IN". The code is processed as it is entered. Be sure to complete the 5-digit sequence even when mistakenly pushing a wrong switch. For example, the code number sequence is 54 321 and you mistakenly enter 53 instead of 54. Complete the entry anyway by pushing 321. The CD-2 player will not operate and "code" will be displayed. Re-enter the correct number sequence and the CD-2 player will become operative.

To enter code 54 321, for example, you must push switch

- 5 - 1x
- 4 - 1x
- 3 - 1x
- 2 - 1x
- 1 - 1x



Code Entry Switches



CD-2 Radio Serial Number

Figure 1



Technical Bulletin

Model

All

Group

9

Subject:

**Radio and CD-2
Security Codes**

Part Identifier

9120/24

Number

9104

Entering Security Codes:

Reno II Radio

When the radio is switched on after the power supply was disconnected, the word "code" appears in the display. The 4-digit security code must be entered by using preset switches 1 through 4. Then press the **LEFT SIDE** of the search tuning rocker switch. If the code is entered correctly, the radio is ready to function again. If the code is entered incorrectly, the display shows "----" for 10 seconds. After three unsuccessful attempts of entering the code, the waiting period is one hour, and after another 16 attempts the radio can only be decoded at the Blaupunkt service facility at customer expense.

To enter code 1766 for example, you must push

- switch 1 - 1x
- switch 2 - 7x
- switch 3 - 6x
- switch 4 - 6x

When the correct code is displayed, press left part of the search tuning rocker switch.

Note: Each preset switch can be pressed repeatedly to reach the correct digit in the display. The code is not processed until the rocker switch is pressed.

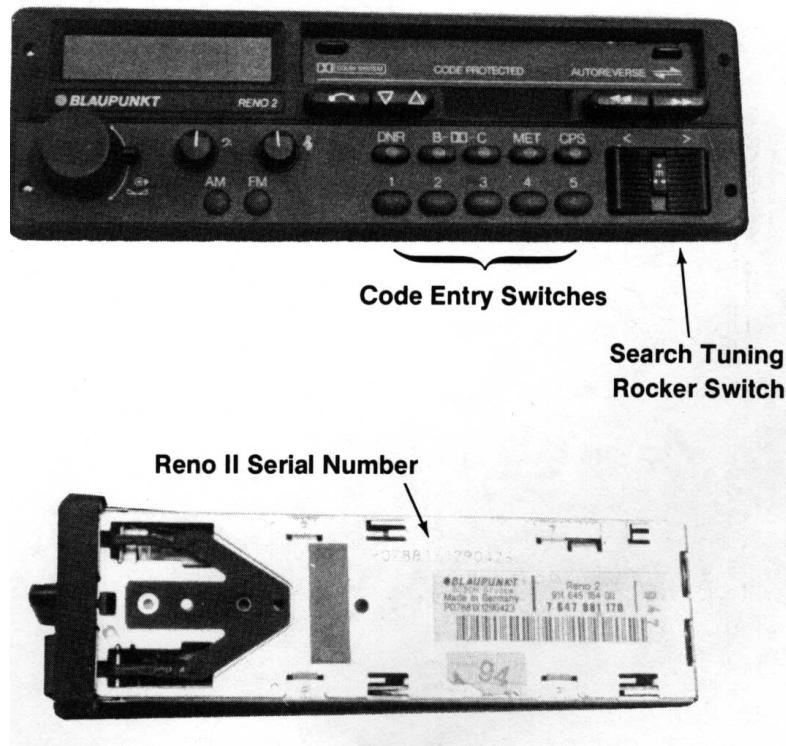


Figure 2



Technical Bulletin

Model

All

Group

9

Subject: Radio and CD-2 Security Codes

Part Identifier
9120/24

Number
9104

Entering Security Codes:

Stuttgart Radio

The 4-digit security code should be entered by the customer or servicing dealer to activate the built-in anti theft circuitry on a new or replacement radio. The Stuttgart radio will operate even after the battery was disconnected or the radio was stolen if the security code was never entered by the customer or servicing dealer. This also applies to new cars. The factory does not enter the security code. In addition, a personal identification number can be entered by the customer. Refer to the instructions in the Stuttgart radio owner's manual.

The 4-digit security code must be entered by using preset switches 1 through 4 when display shows "code". After entering the correct code, depress the **RIGHT SIDE** of the search tuning rocker switch. If the code is entered correctly, the radio is ready to function again. If the code is entered incorrectly, the display shows "----" for 10 seconds. After six unsuccessful attempts to enter the code, the waiting period is one hour, and after 20 incorrect attempts, the radio can only be decoded at the Blaupunkt service facility at customer expense.

To enter code 4393 for example, you must push

- switch 1 - 4x
- switch 2 - 3x
- switch 3 - 9x
- switch 4 - 3x

When the code is displayed, press right part of the search tuning rocker switch.

Note: Each preset switch can be pressed repeatedly to reach the correct digit in the display. The code is not processed until the rocker switch is pressed.

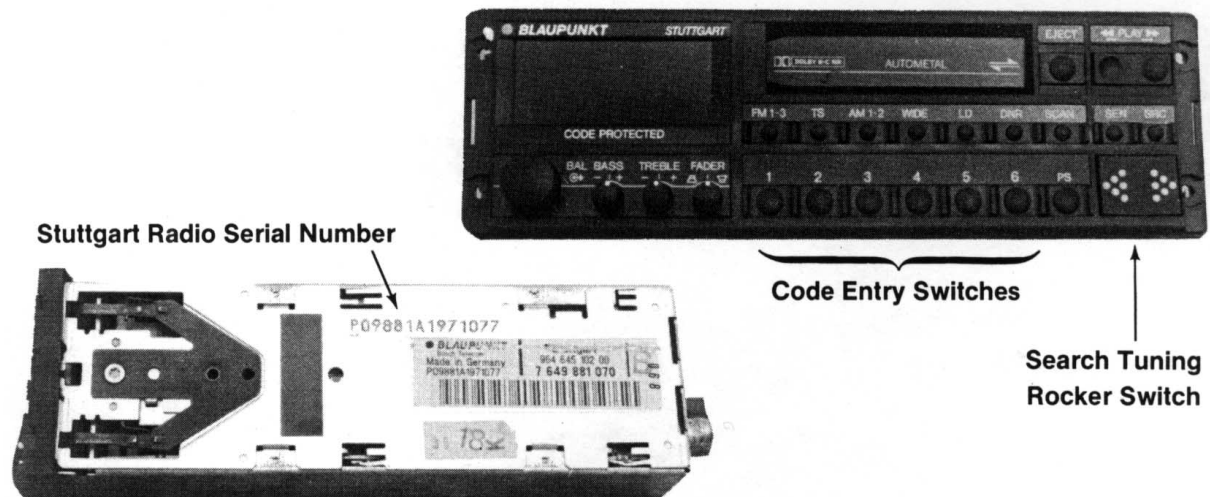


Figure 3

DISPOSITIVE CAR PARTS NORTH AMERICA INC.

